

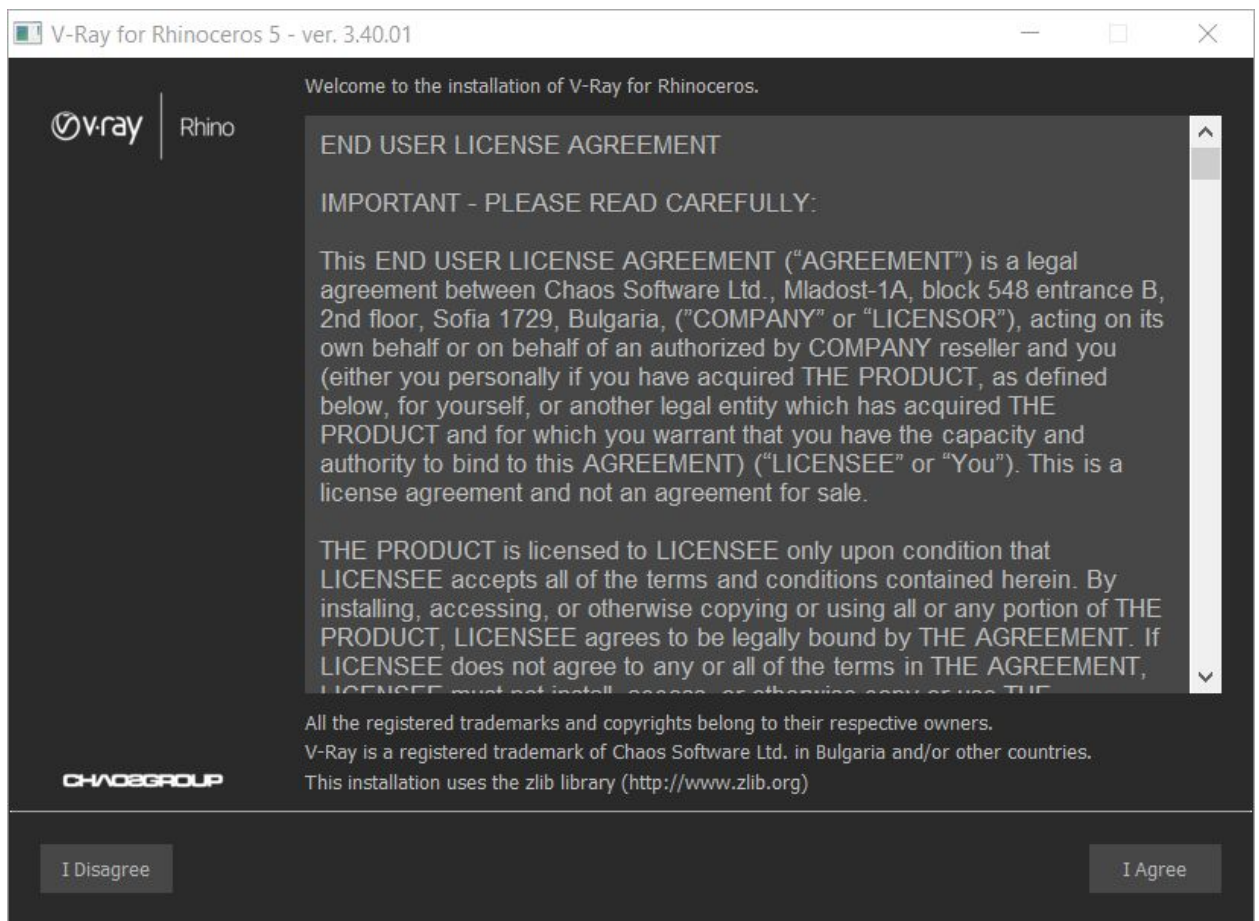
V-Ray 3.4 for Rhino

Installation Guide

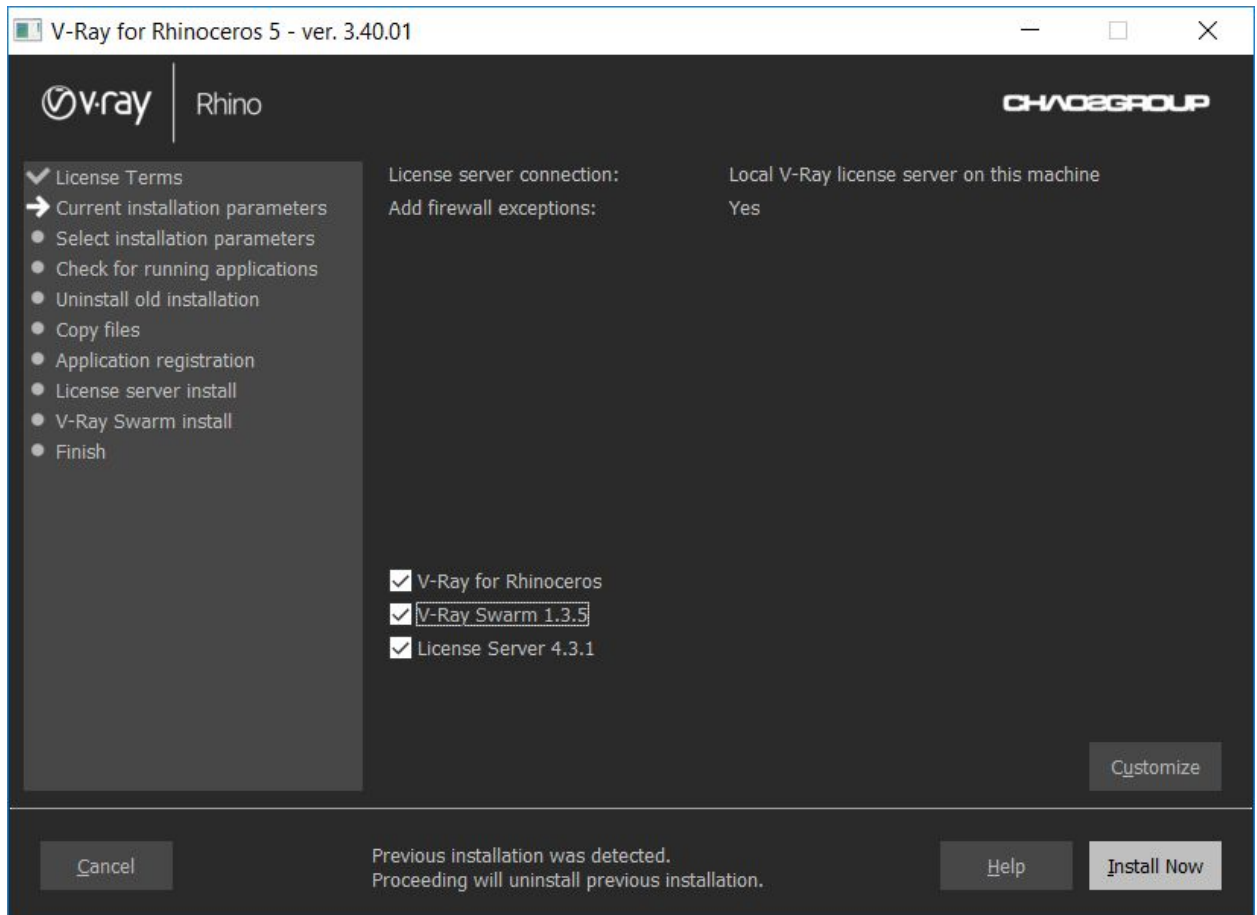
Windows

To install V-Ray make sure your Windows account has administrative privileges and double-click the installation file.

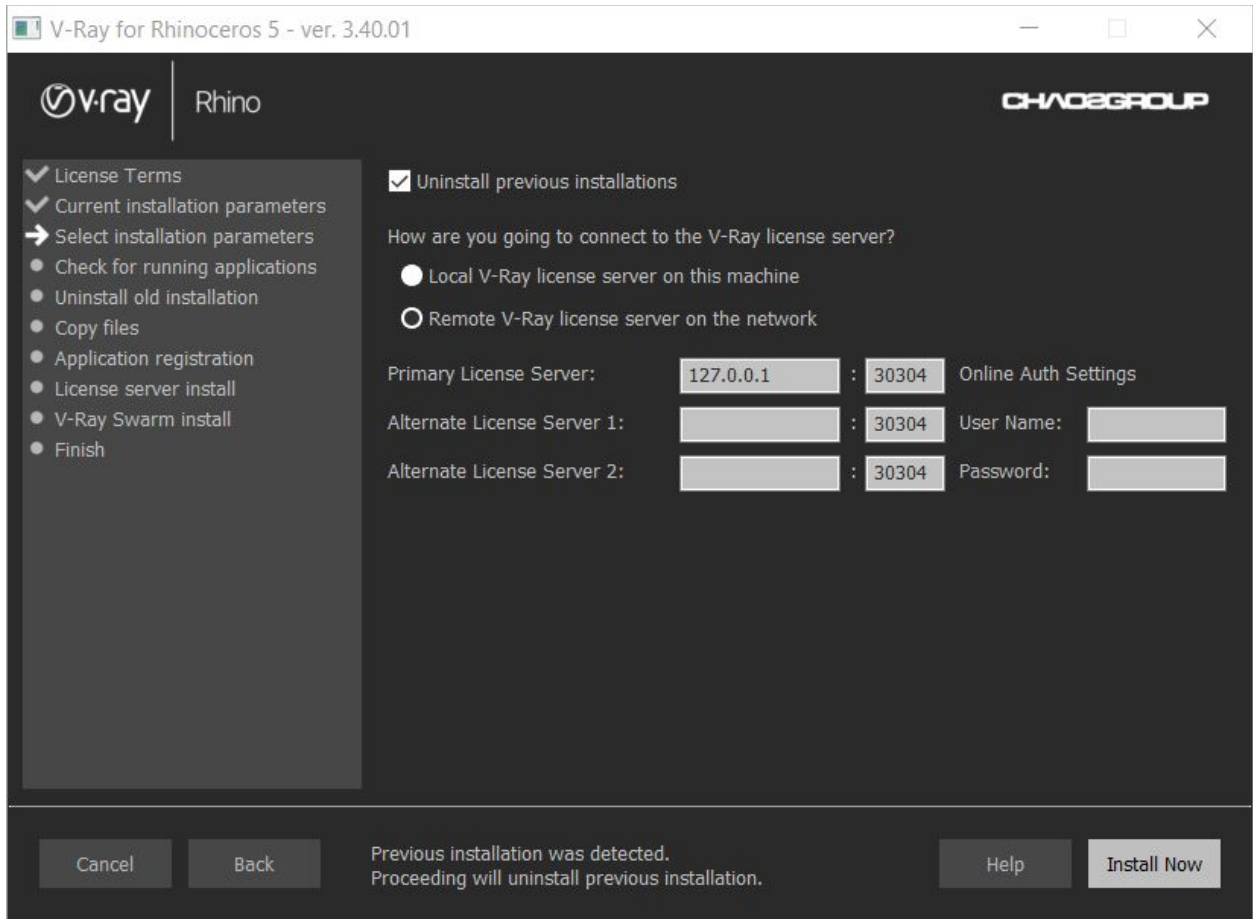
You will be presented with the license agreement. Please take a moment to review it, Click **I Agree** to continue



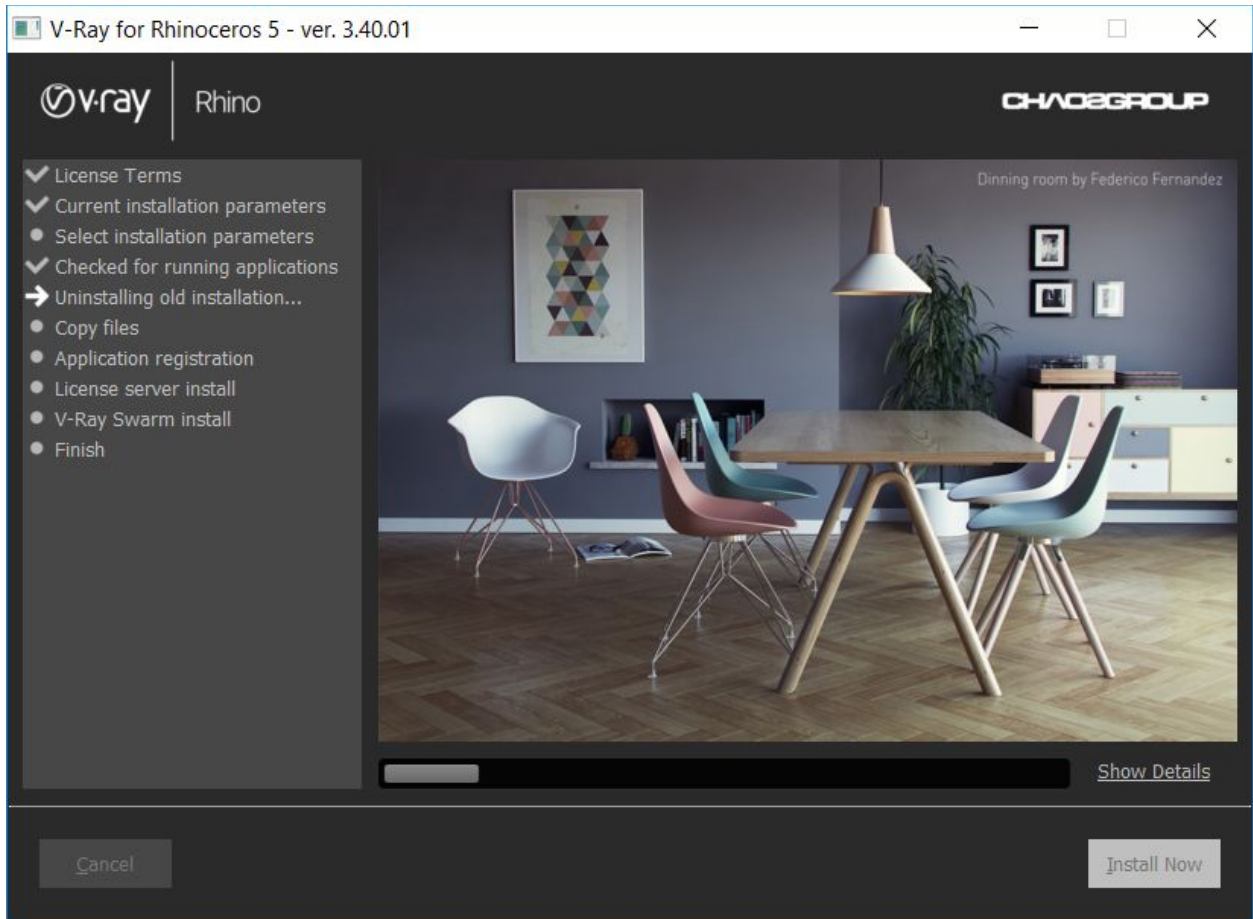
Next you can select the installation type. The installer should detect the root folder automatically. Please make sure that the destination is correct. You can also choose to customize the installation



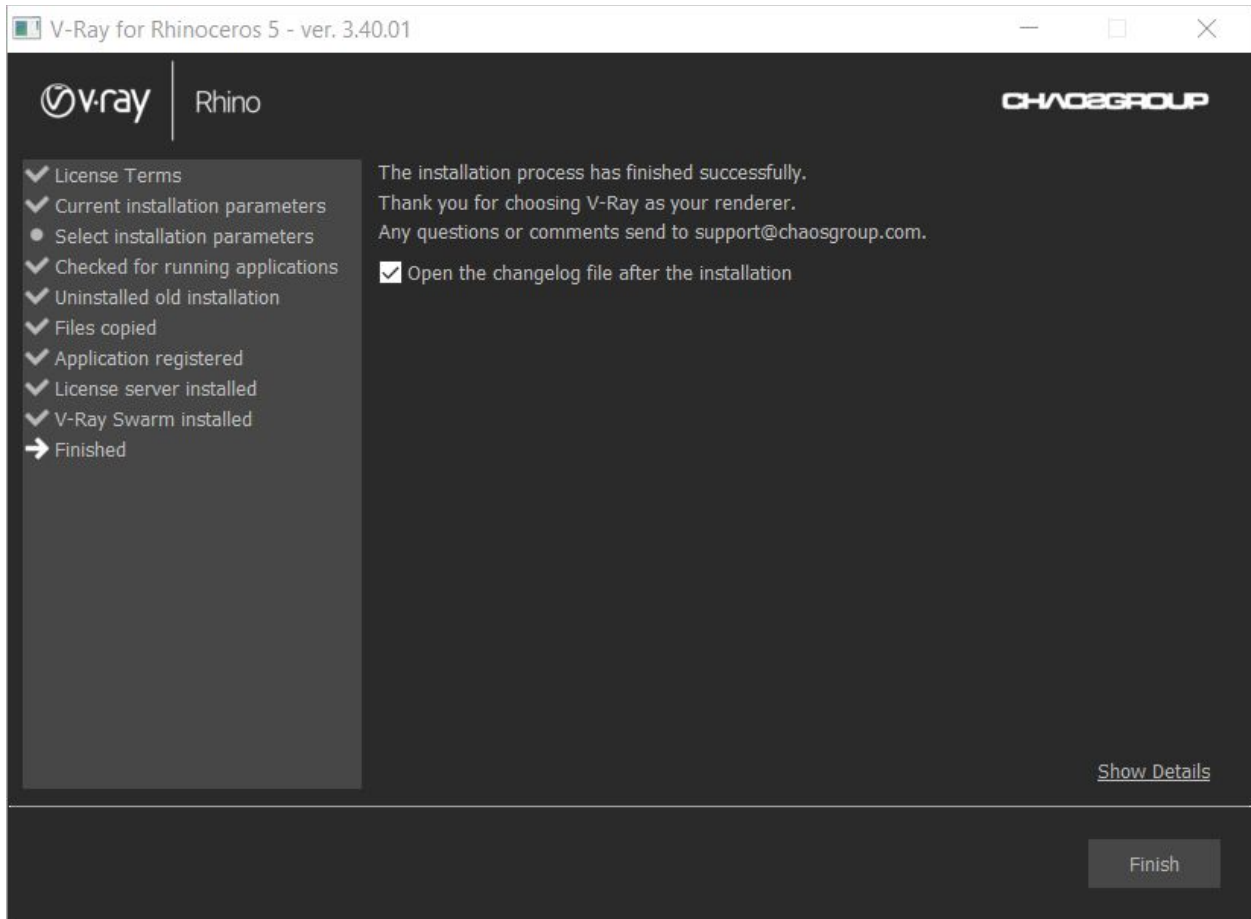
If you choose to customize the installation, this screen will be presented.



Click **Install Now** to begin the installation.



Click **Finish** to complete the installation.



V-Ray License Server

After installing V-Ray, the V-Ray License Server installation window will appear next.

For more information, see how to [set up your license](#).