

V-Ray Standalone

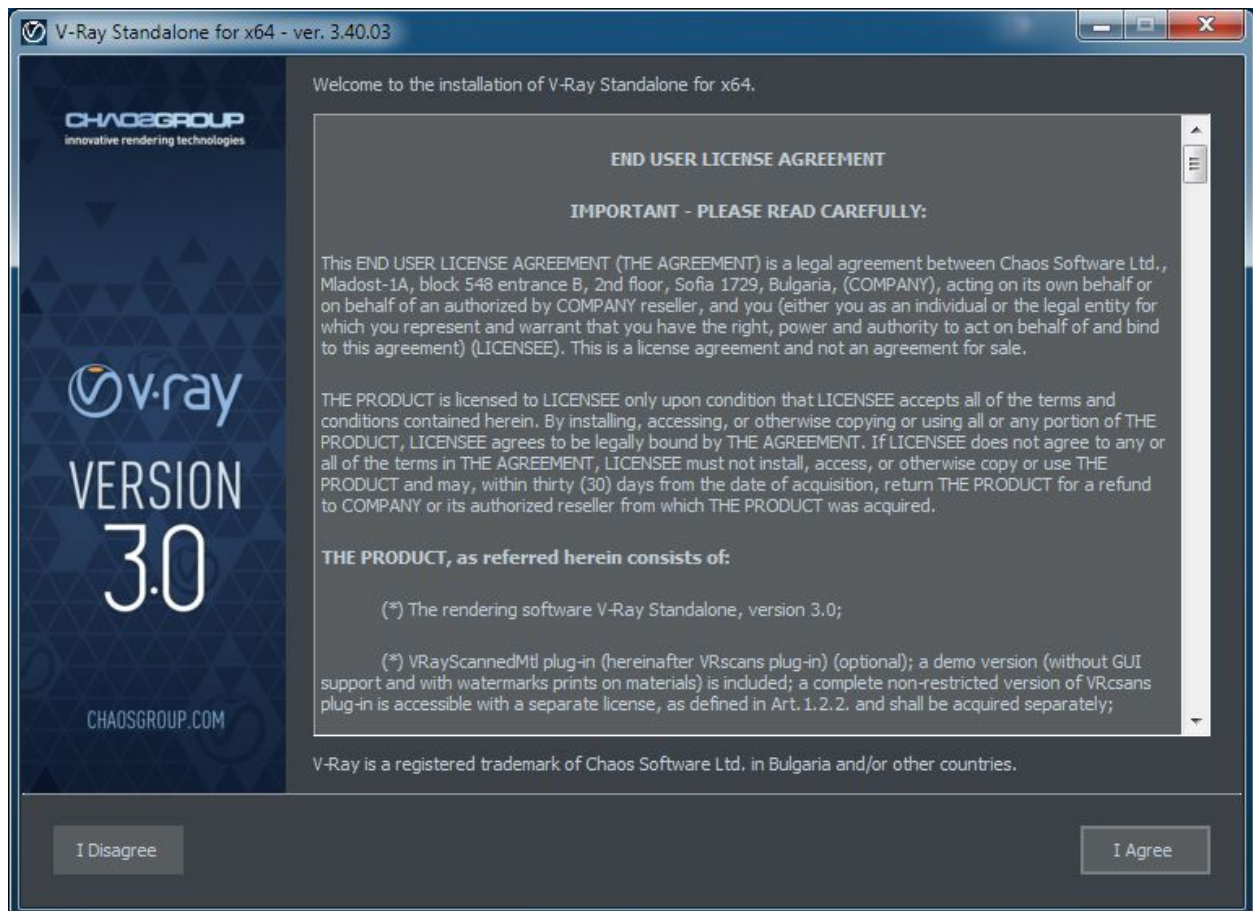
Installation Guide for Windows

Windows

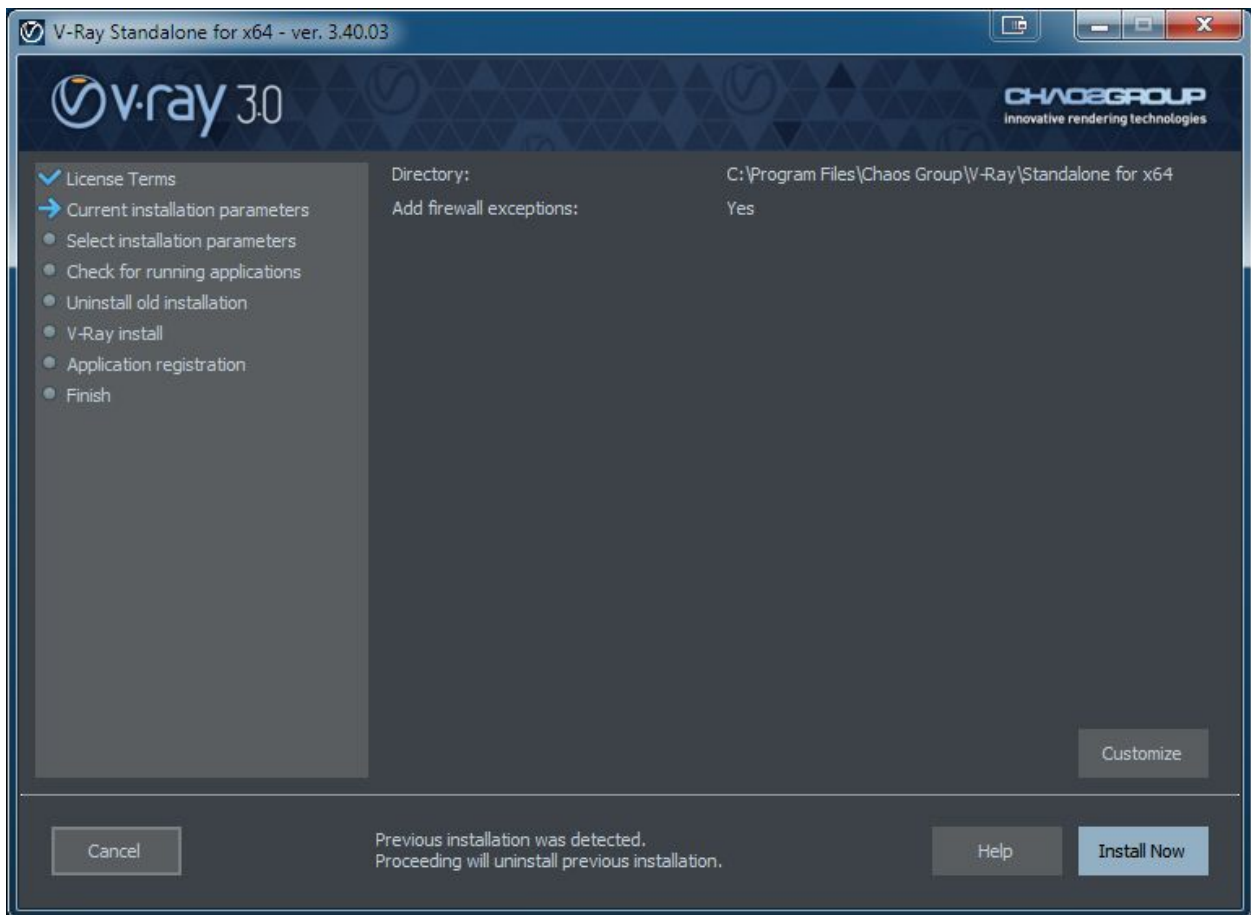
To install the V-Ray Standalone make sure your Windows account has administrative privileges and double-click the installer to run it:

To complete the installation follow these steps:

1. You will be presented with the V-Ray licensing agreement. Please take a moment to review the agreement. Click the **I agree** button to proceed:



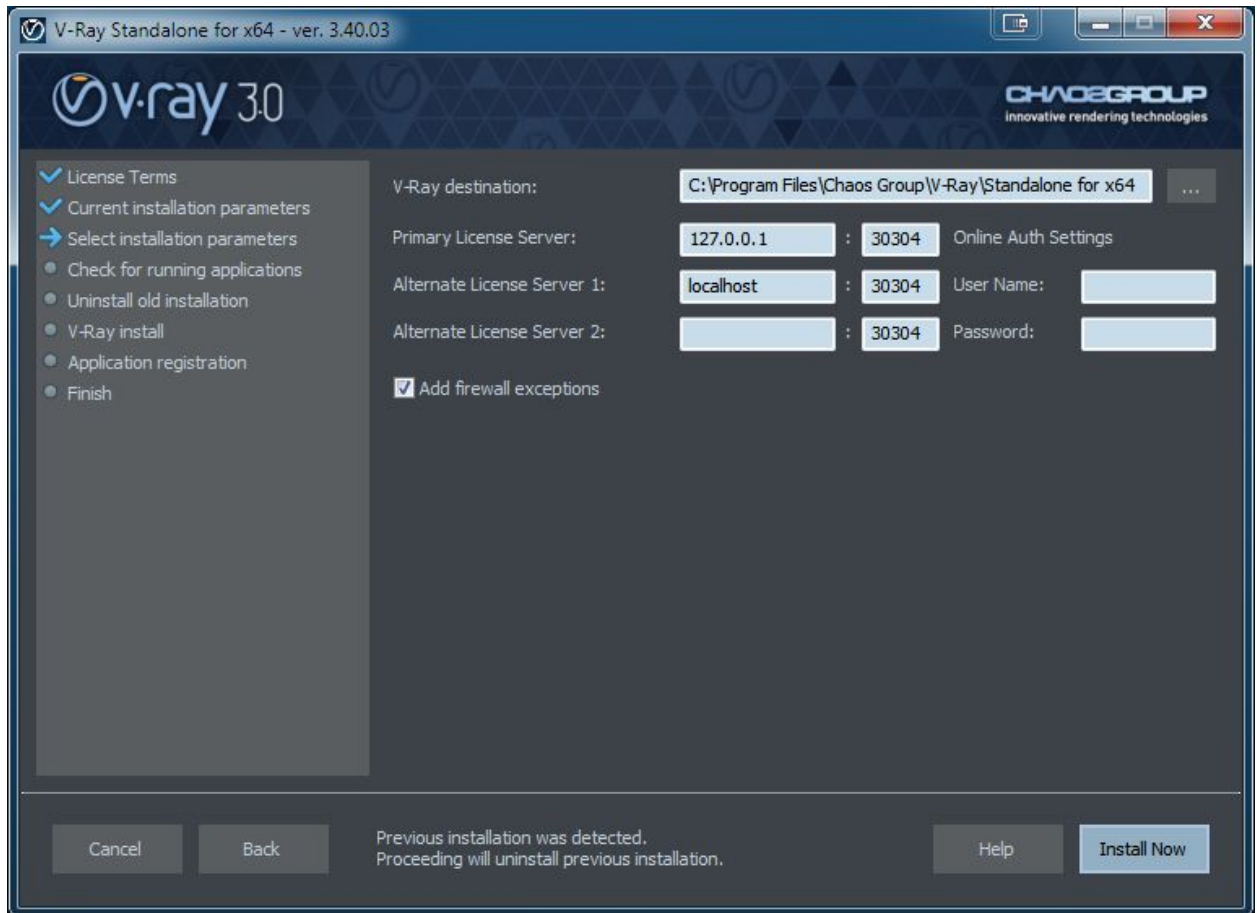
2. During the next step you will see the installation folder. You can click **Customize** to adjust some of the installation settings.



3. If you choose to adjust the settings you will see the screen below. The options here allow you to specify:

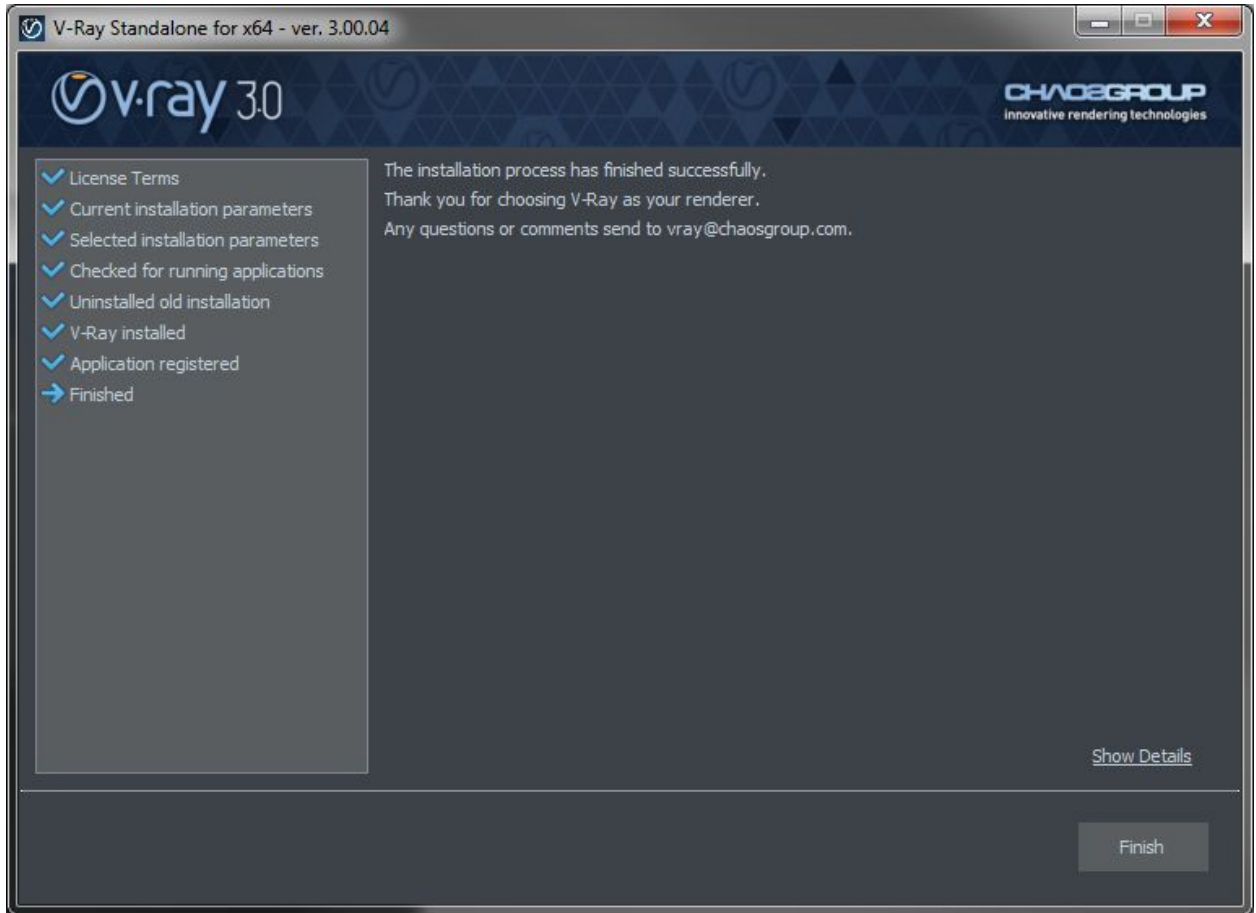
- a. **V-Ray destination** – manually specify the location where V-Ray will be installed
- b. **How are you going to connect to the V-Ray license server** – specifies whether the V-Ray license server will run locally or on another machine. If you select “Remote V-Ray license server on the network” you will be given fields to specify the IP address of the machine on which the V-Ray License server is running. Please leave the port 30304 unchanged.

Common settings for an installation with a local license server and default paths, should look like the screenshot below:



Once you are ready click **Install Now**.

4. The installer will proceed to uninstall any previous versions and install V-Ray Standalone 3.0. If the installation was successful, you will get this screen.



Press the **Finish** button.