

# V-Ray for Softimage

## Installation Guide for Windows

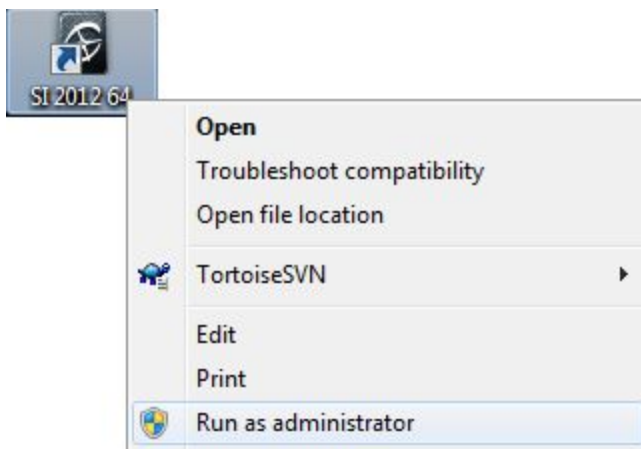
# Installing V-Ray for Softimage

---

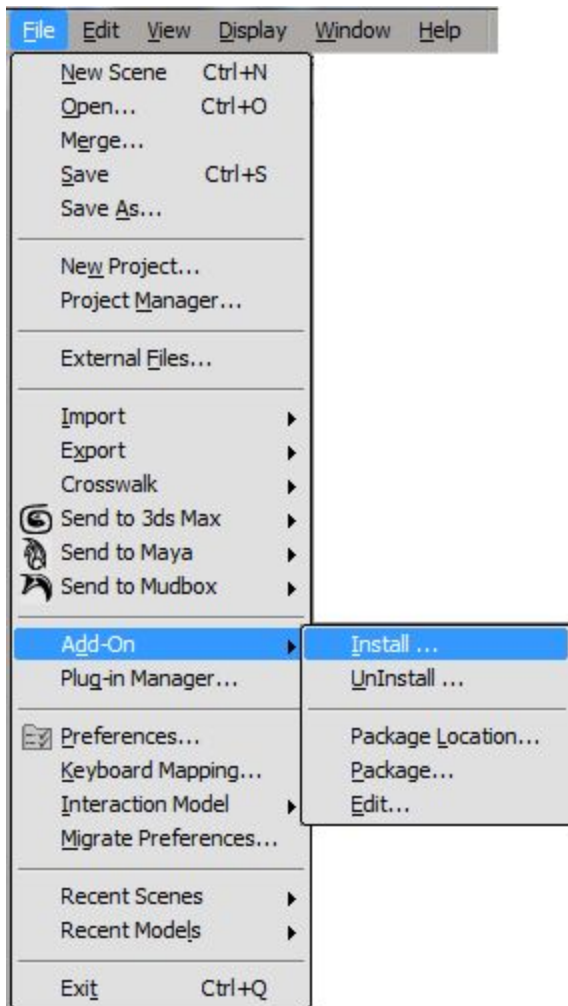
The core components of V-Ray for Softimage are distributed as a .xsiaddon file. If you've never installed add-ons before, we suggest that you look at the Softimage [documentation](#) on this feature first.

Before installing this distribution of V-Ray make sure that you have removed any previous versions. You can see how to uninstall V-Ray [here](#).

1. First unpack the **vray\_adv\_3xxxx\_softimage20xx\_64.zip** file that you downloaded from our web site into a easily accessible location i.e. C:\vrayinstall\
2. In order to install V-Ray first run Softimage with administrative priviliges

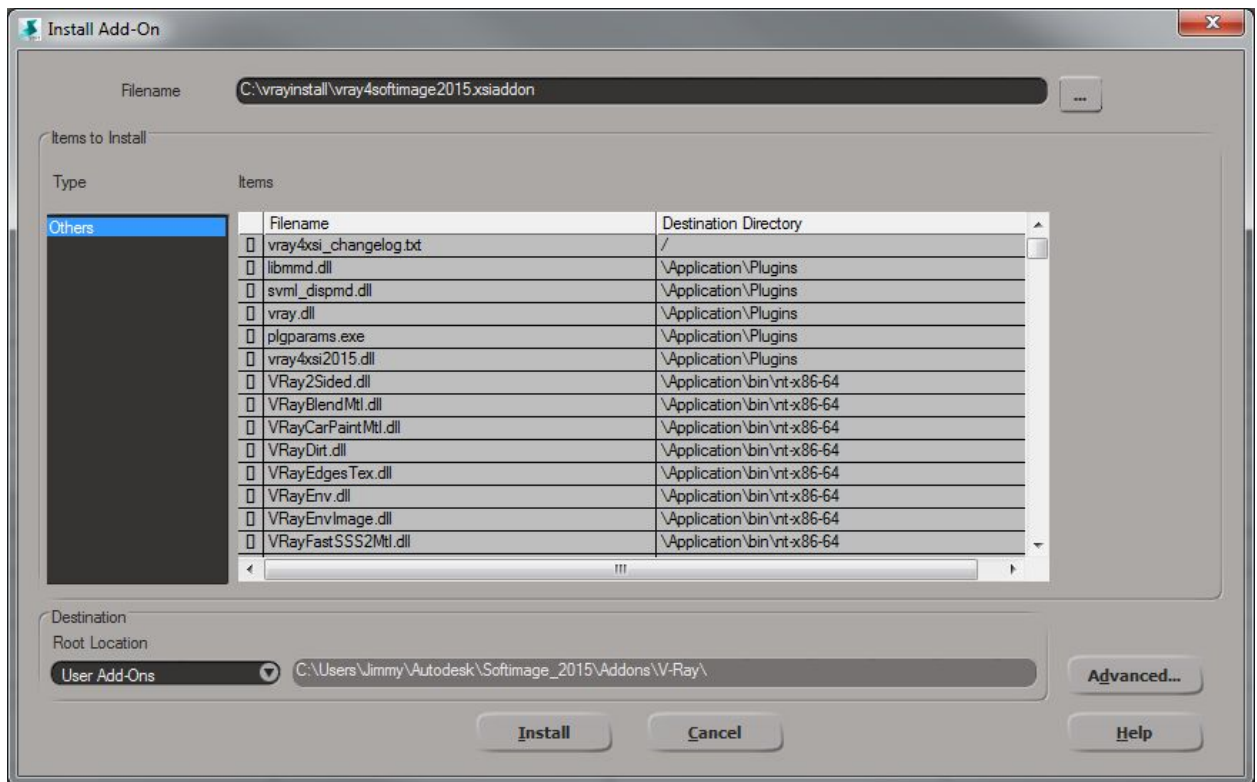


2. Go to File > Add-on > Install



3. In the next dialogue click on the ... button and navigate to the folder that you unpacked the installation (i.e. C:\vrayinstall\ ) of V-Ray and select **vray4softimage20xx.xsiaddon**

4. Once the file is loaded click **Install**



5. You will get a message that asks you to restart Softimage. Please click OK and restart Softimage

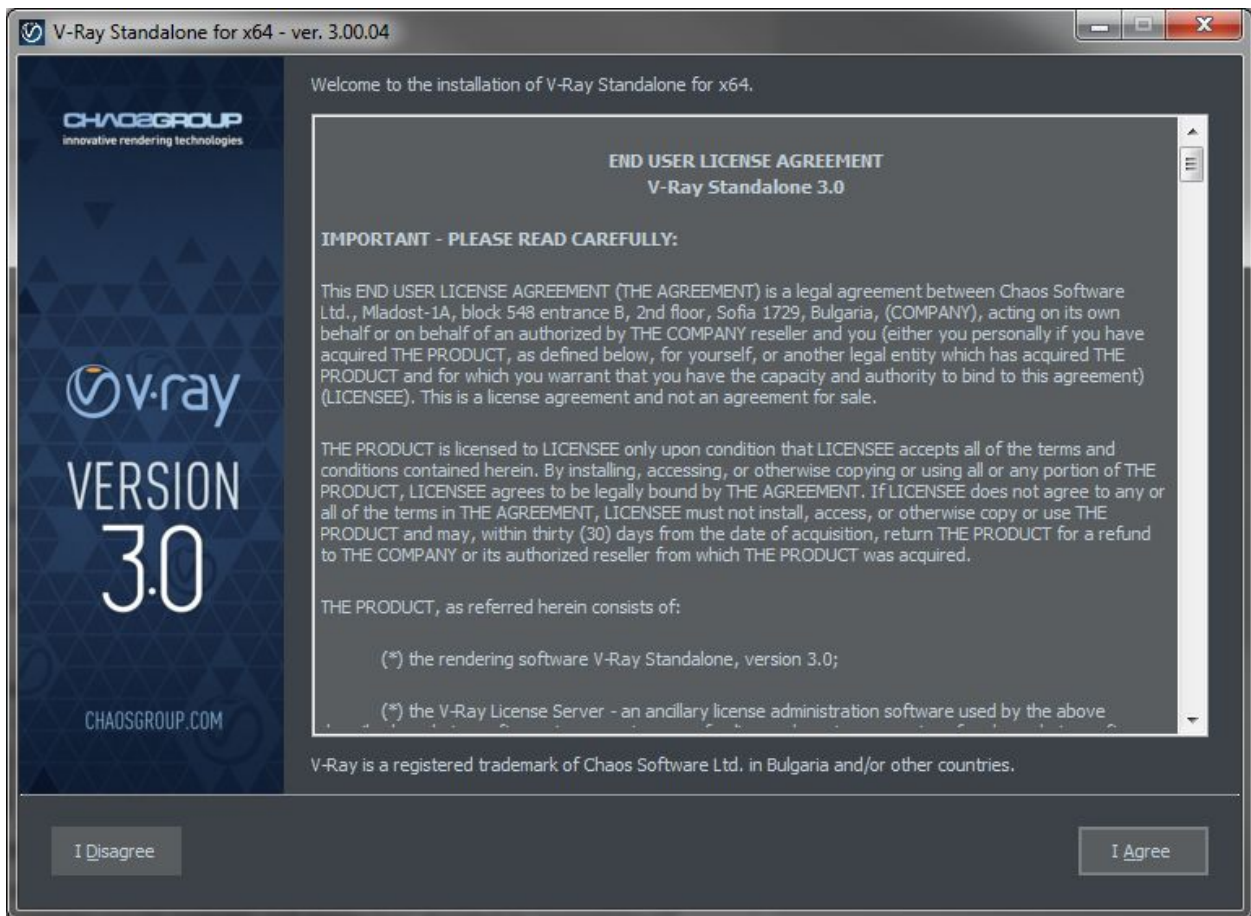
## Installing V-Ray Standalone

---

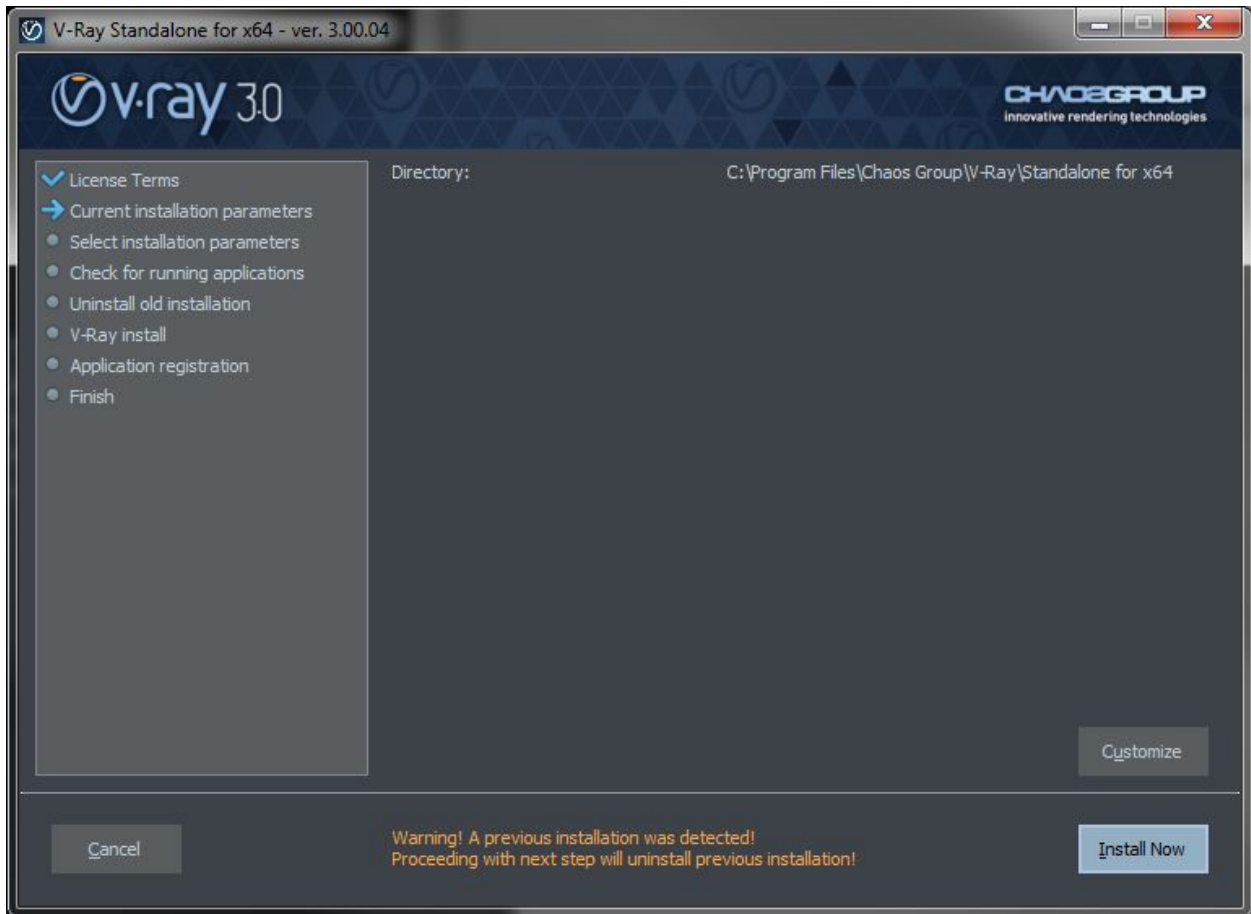
To install the V-Ray Standalone make sure your Windows account has administrative privileges and double-click the installation file **vraystd\_adv\_3xxxx\_x64\_xxxx** that came with the V-Ray for Softimage installation.

To complete the installation follow these steps:

1. You will be presented with the V-Ray licensing agreement. Please take a moment to review the agreement. Click the "I agree" button to proceed:



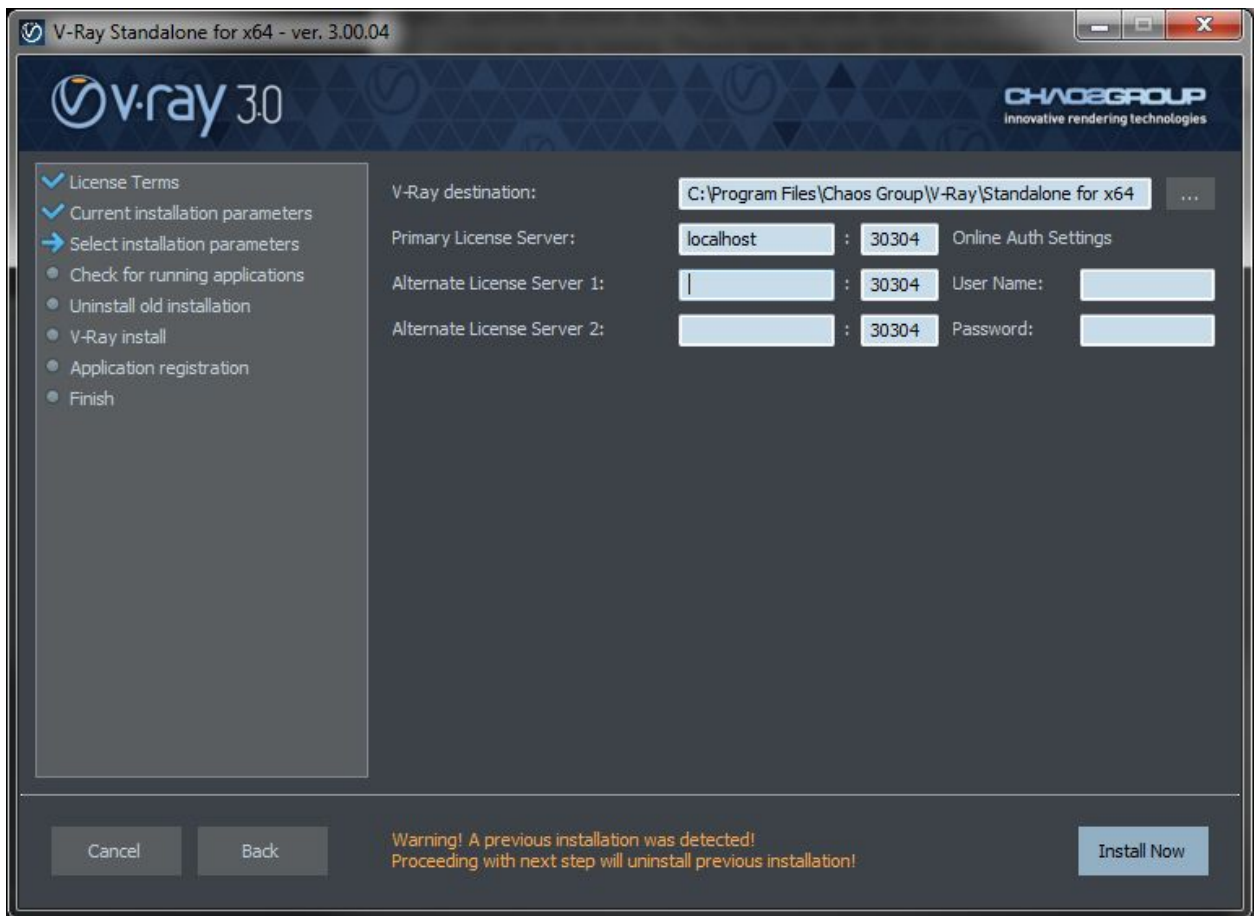
2. During the next step you will see the installation folder. You can click "Customize" to adjust some of the installation settings.



3. If you choose to adjust the settings you will see the screen below. The options here allow you to specify:

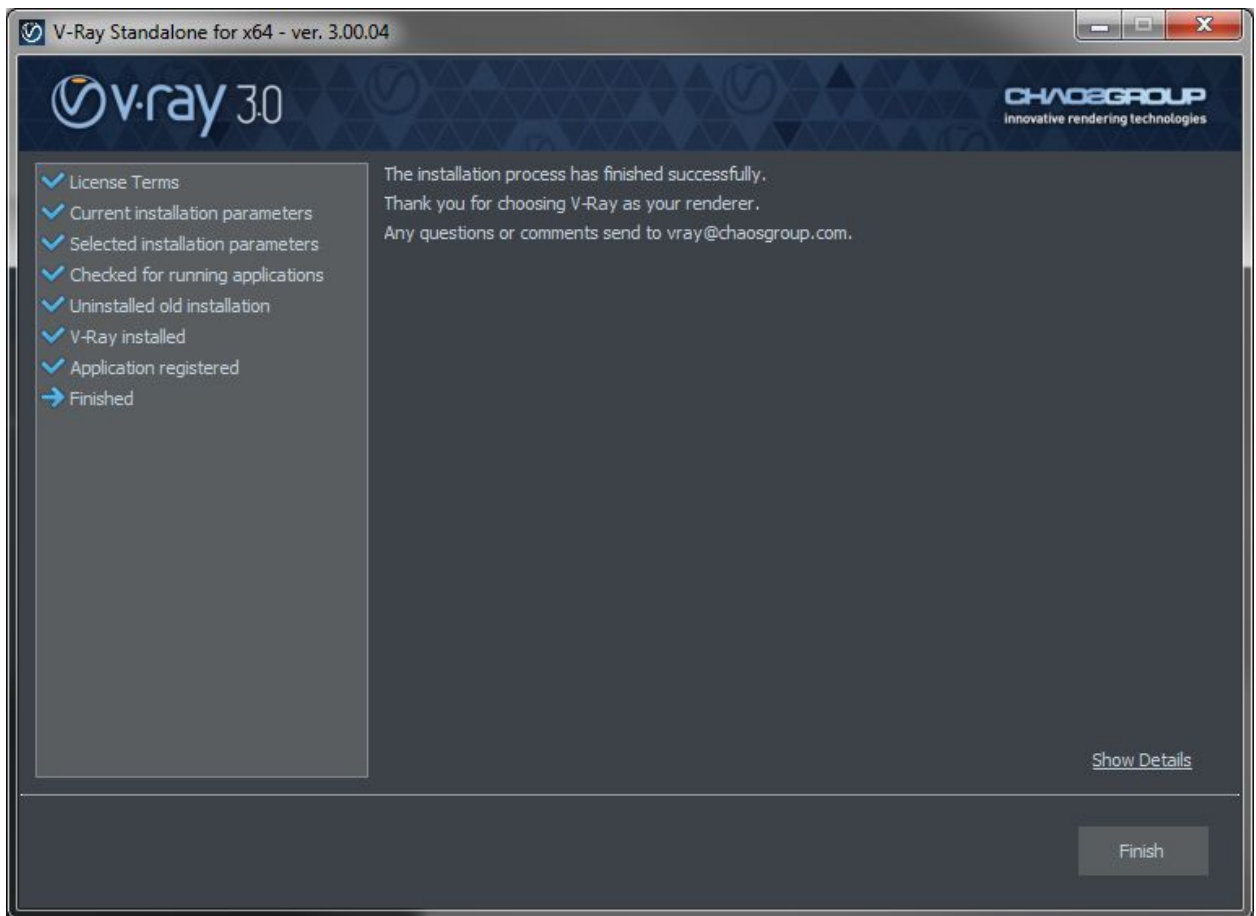
- a. **V-Ray destination** – manually specify the location where V-Ray will be installed
- b. **How are you going to connect to the V-Ray license server** – specifies whether the V-Ray license server will run locally or on another machine. If you select “Remote V-Ray license server on the network” you will be given fields to specify the IP address of the machine on which the V-Ray License server is running. Please leave the port 30304 unchanged.

Common settings for an installation with a local license server and default paths, should look like the screenshot below:



Once you are ready click "Install Now"

4. The installer will proceed to uninstall any previous versions and install V-Ray Standalone 3.0. If the installation was successful, you will get this screen.



Press the "Finish" button.