

V-Ray 3.4 for SketchUp

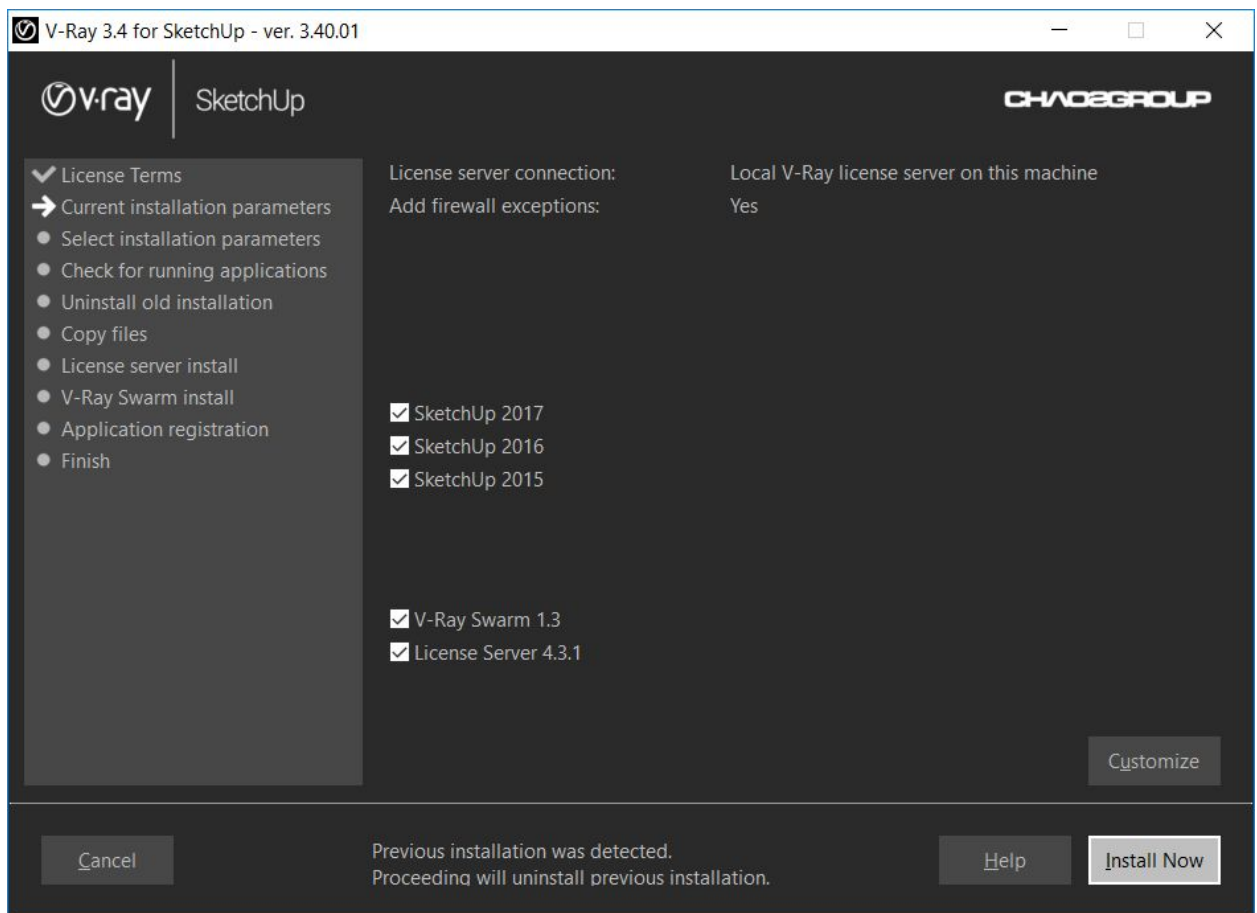
Installation Guide

Windows

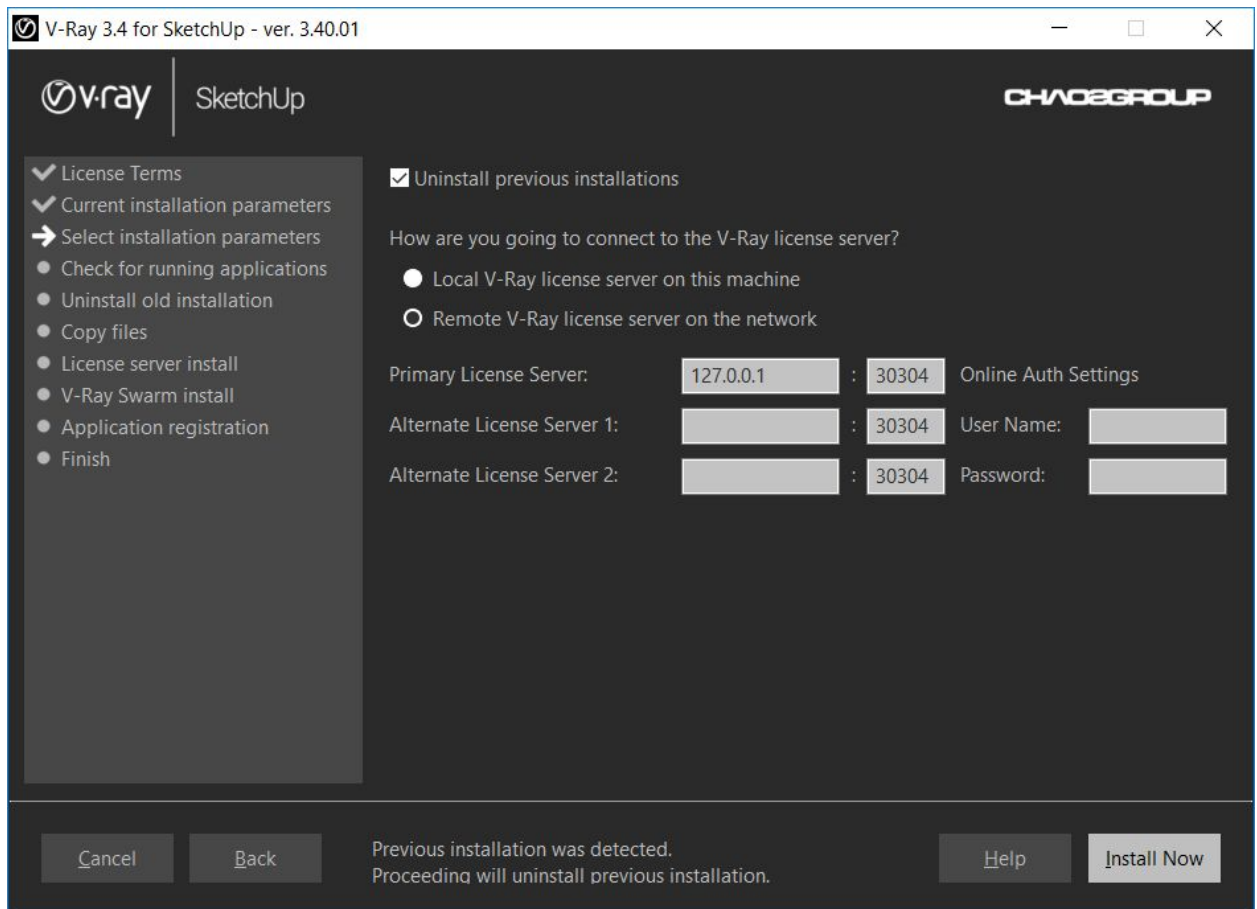
To install V-Ray make sure your Windows account has administrative privileges and double-click the installation file.

1. You will be presented with the [license agreement](#). Please take a moment to review it, Click **I Agree** to continue

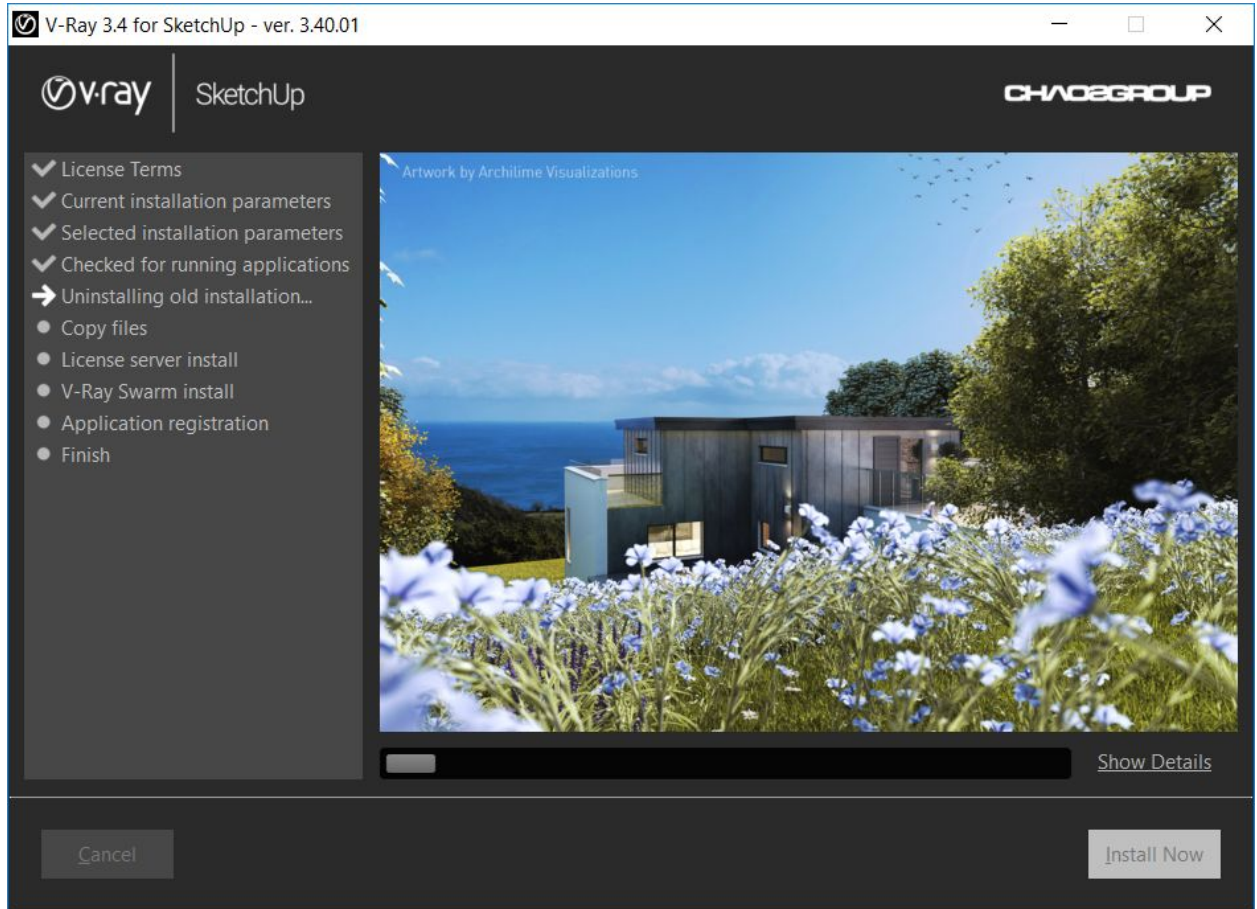
2. Next you can select the installation type. The installer should detect the root folder automatically. Please make sure that the destination is correct. You can also choose to customize the installation.



3. If you choose to customize the installation, this screen will be presented.



4. Click **Install Now** to begin the installation.



5. Click **Finish** to complete the installation.

- ✓ License Terms
- ✓ Current installation parameters
 - Select installation parameters
- ✓ Checked for running applications
- ✓ Uninstalled old installation
- ✓ Files copied
- ✓ License server installed
- ✓ V-Ray Swarm installed
- ✓ Application registered
- Finished

The installation process has finished successfully.
Thank you for choosing V-Ray as your renderer.
Any questions or comments send to support@chaosgroup.com.

Open the changelog file after the installation

[Show Details](#)

Finish